



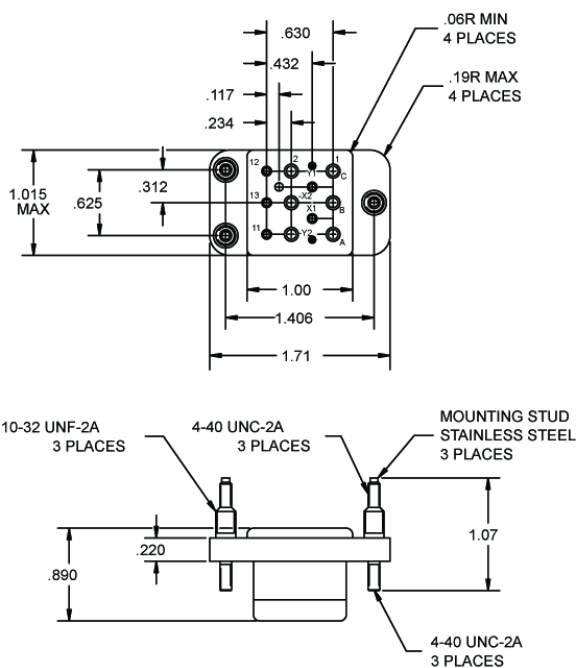
Basic socket series designation for:

Series KDL

Designed to the standards and requirements of:

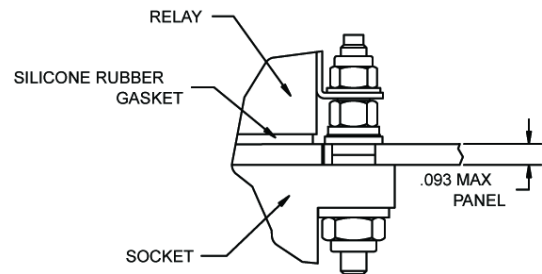
MIL-S-12883/48

SOCKET DRAWING



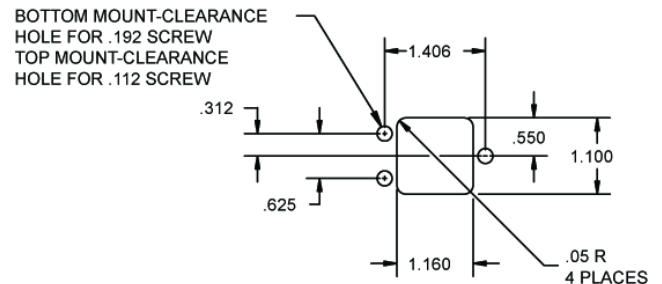
HARDWARE MOUNTING

MOUNTING DETAIL 3 PLACES



MOUNTING DIMENSIONS

SUGGESTED MOUNTING HOLE LAYOUT



GENERAL CHARACTERISTICS

1. Supplied with mounting hardware and No. 12 contacts and No.12 crimp for power terminals; No. 16 contacts, No. 16 crimp for coil and auxiliary terminals; No. 20 contacts, No. 20 crimp for coil terminals.

2. Standard tolerances

.xx ± .01; xxx ± .005

3. Weight

.125 lb max

4. Temperature range

-70° C to +125° C