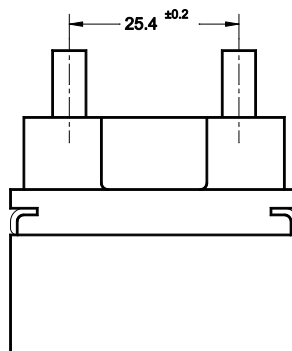
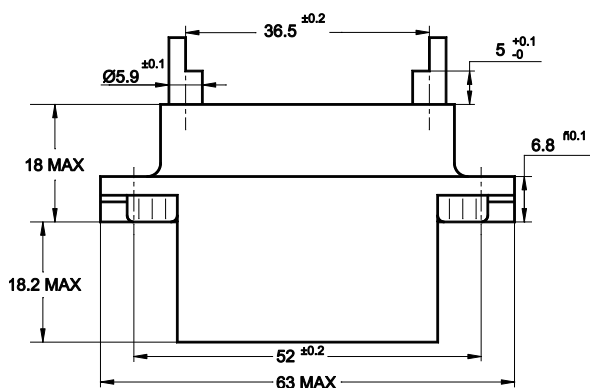
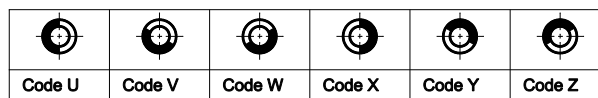


**Applicable relays:**  
SERIES F670, FD670,  
F670S1, F670S2



### CODING KEY DETAIL DÉTAIL CLÉS DE DÉTROMPAGE



## GENERAL CHARACTERISTICS CARACTERISTIQUES GENERALES

<b>Contact Resistance / Résistance de contact</b>	< 5mΩ
<b>Maximum Current / Intensité maximale</b>	15A
<b>Dielectric Strength / Rigidité diélectrique</b>	2625 Vrms / 50 HZ
<b>Insulation Resistance / Resistance d'isolement</b>	> 1000 MΩ at 100 Vdc
<b>Weight / Masse</b>	105g max

LEACH INTERNATIONAL EUROPE S.A.S.

Tel: +33 3 87 97 98 97

Fax: +33 3 87 97 96 86

LEACH INTERNATIONAL ASIA PACIFIC

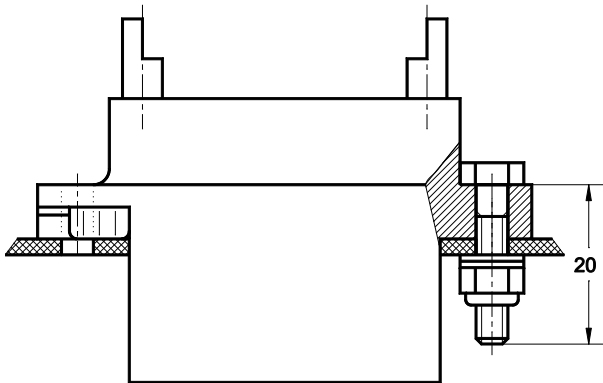
Tel: +852 2 191 3830

Fax: +852 2 389 5803

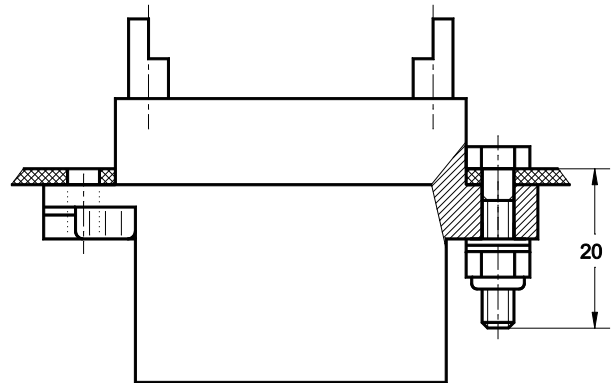
The technical information provided by Leach International Europe is to be used as a guide only, and is not meant for publication or as documentation for altering any existing specification. Dimensions are in millimeters unless otherwise specified. Rev. 06/2019.

**MOUNTING STYLES**  
*TYPES DE FIXATIONS*

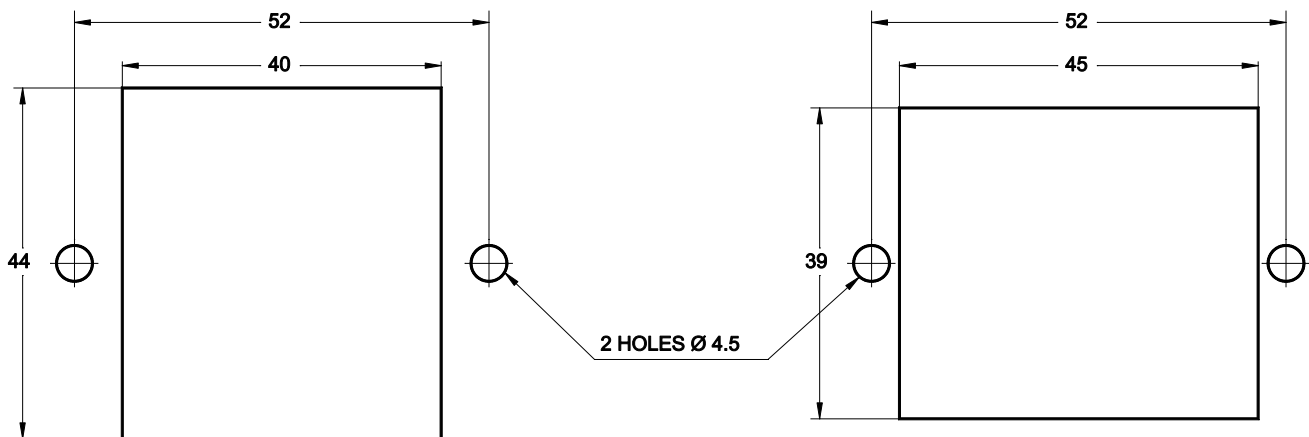
**TOP MOUNTING**  
*MONTAGE SUR STRUCTURE*



**REAR MOUNTING**  
*MONTAGE SOUS STRUCTURE*



**MOUNTING CUT OUT**  
*DECOUPE DE LA STRUCTURE*



**HARDEWARE: (SUPPLIED WITH THE BASE)**  
- 2 SCREWS AND SELF LOCKING NUTS M4  
- 2 FLATS AND SPRINGS WASHERS

**VISSERIE: (FOURNIE AVEC L'EMBASE)**  
- 2 VIS ET ECROU M4  
- 2 RONDELLES PLATES ET 2 ONDULEX