



- **Limit switch with snap action**
Inverseur fin de course à rupture brusque

- **Control setting by translation in the collar**
Réglage de commande par translation dans le collier

- **Use limited to axial attack**
Emploi limité à une attaque axiale

- **Contact arrangement** **1 PDT**
Combinaison des contacts

GENERAL CHARACTERISTICS CARACTERISTIQUES GENERALES

- **Nickel plated brass body set**
Ensemble corps laiton nickelé

- **Light alloy base**
Socle alliage léger

- **Stainless steel collar**
Collier en inox

- **Outlets welded to a tight-fitting through**
Sorties raccordées par soudures à une traversée hermétique

- **Weight** **53 g ±5% (with collar)**
Masse **36 g ±5% (without collar)**

ELECTRICAL CHARACTERISTICS CARACTERISTIQUES ELECTRIQUES

Circuit Circuits	30 Vcc	115 V / 400 Hz
Resistive / Résistif	5 A	4 A
Inductive 5/1000 / Inductif (5/1000)	3 A	3 A
Lights / Lampes	1 A	1 A
Voltage drop at 5A / Chute de tension à 5A	120 mV max	
Temperature range / Gamme de température	-50°C to +80°C	
Endurance / Endurance	50 000 operating	

LEACH INTERNATIONAL EUROPE S.A.S.
Tel: +33 3 87 97 98 97
Fax: +33 3 87 97 96 86

LEACH INTERNATIONAL ASIA PACIFIC
Tel: +852 2 191 3830
Fax: +852 2 389 5803

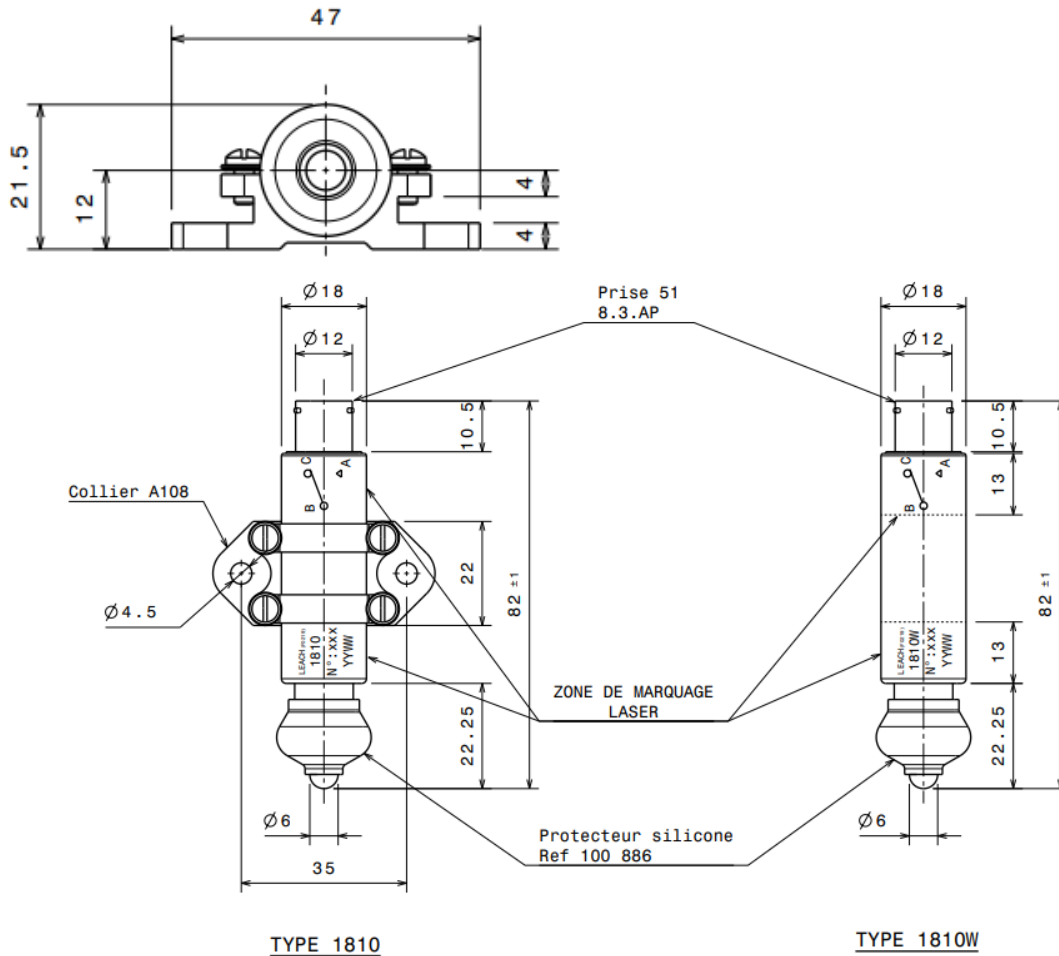
The technical information provided by Leach International Europe is to be used as a guide only, and is not meant for publication or as documentation for altering any existing specification. Dimensions are in millimeters unless otherwise specified. Rev. 03/2025.

MECHANICAL CHARACTERISTICS
CARACTERISTIQUES MECANIQUES

Forces / Forces	
Operating / Commande	2.5 kg max
Release / Relâchement	0.4 kg min
End of travel / Fin de course	2.5 kg max
Operating travel / Course de commande	2.2 mm max
Max total travel / Course totale maxi	3 mm
Release travel / Course de relâchement	1.2 mm max

MOUNTING STYLES
TYPES DE CONFIGURATION

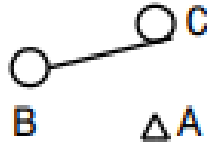
Dimensions are in mm
General tolerances, ± 0.5 mm



1810
/ 1810-W

LIMIT SWITCH, 1 PDT, 5 A / 30 VDC
INVERSEUR FIN DE COURSE, 1 PDT, 5 A / 30VDC

SCHEMATIC DIAGRAM
SCHEMA



NUMBERING SYSTEM
SYSTEME DE REFERENCES

Reference	1810	1810-W
Collar / Collier	Avec	Sans