

Applicable relays and timers:

F470, F472, FD470, FD472, F470S1
F670, FD670, F670S1, F670S2
THLOR, THLAO, THLM, THLC

PRINCIPAL TECHNICAL CHARACTERISTICS CARACTERISTIQUES TECHNIQUES PRINCIPALES

- **Monobloc design in polycarbonate resin**
Conception monobloc en résine de polycarbonate
- **Fire and smoke specification NFF 16-101 / NFF 16-102**
Spécification Feu-fumée NFF 16-101 / NFF 16-102
- **Railway standard: IEC60571, EN50155**
Norme ferroviaire : IEC60571, EN50155
- **Operating temperature: -25°C to +70°C**
Température de fonctionnement : -25°C to +70°C
- **Weight** **113 g ±5% (470 / D470 / THL)**
Masse **135 g (670 / D670 / 670S1 / 670S2)**
- **Mounting: DIN Rail EN50022**
Montage: DIN Rail EN50022
- **Suitable for relay with B, D and H mounting style**
Convient aux relais avec style de montage B, D et H

ELECTRICAL CHARACTERISTICS CHARACTERISTIQUES ELECTRIQUES

| Product part number / Référence du produit | Voltage / Tension | Power / Puissance | Rupture voltage (min.) / Tension de rupture (min.) | Rupture voltage (max.) / Tension de rupture (max.) |
|---|-------------------|-------------------|---|---|
| SHKE470-24-XXX | 24 V | 1.5 kW | 36.7 V | 40.5 V |
| SHKE470-36-XXX | 36 V | 1.5 kW | 56.7 V | 62.7 V |
| SHKE470-72-XXX | 72 V | 1.5 kW | 122 V | 135 V |
| SHKE470-110-XXX | 110 V | 1.5 kW | 178 V | 197 V |

| Product part number / Référence du produit | Voltage / Tension | Power / Puissance | Rupture voltage (min.) / Tension de rupture (min.) | Rupture voltage (max.) / Tension de rupture (max.) |
|---|-------------------|-------------------|---|---|
| SHKE670-24-AD | 24 V | 1.5 kW | 36.7 V | 40.5 V |
| SHKE670-36-AD | 36 V | 1.5 kW | 56.7 V | 62.7 V |
| SHKE670-72-AD | 72 V | 1.5 kW | 122 V | 135 V |
| SHKE670-110-AD | 110 V | 1.5 kW | 178 V | 197 V |

LEACH INTERNATIONAL EUROPE S.A.S.

Tel: +33 3 87 97 98 97

Fax: +33 3 87 97 96 86

LEACH INTERNATIONAL ASIA PACIFIC

Tel: +852 2 191 3830

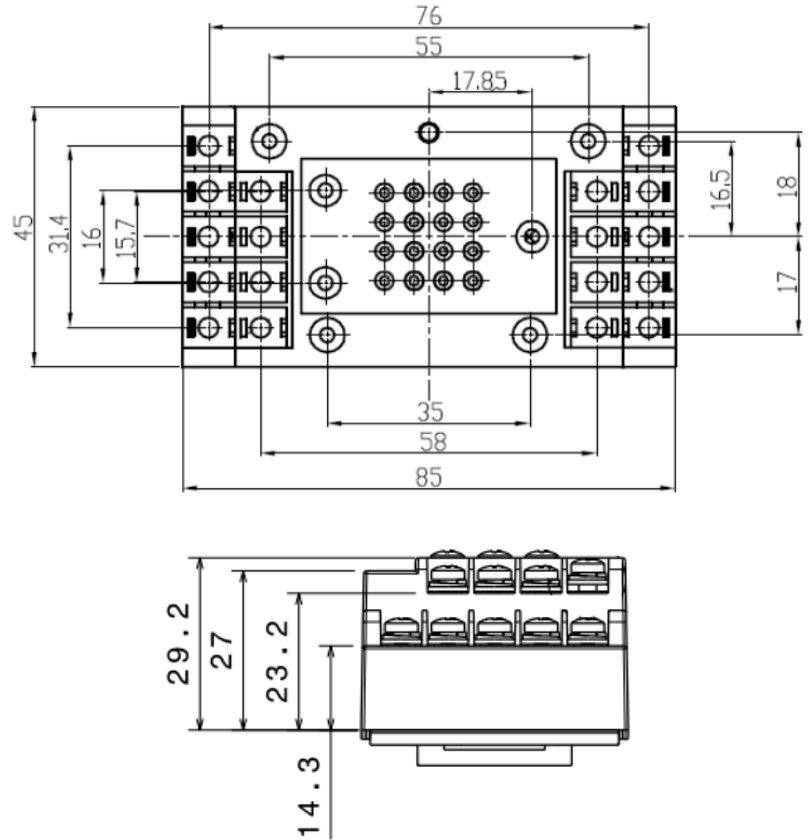
Fax: +852 2 389 5803

The technical information provided by Leach International Europe is to be used as a guide only, and is not meant for publication or as documentation for altering any existing specification. Dimensions are in millimeters unless otherwise specified. Rev. 03/2025.

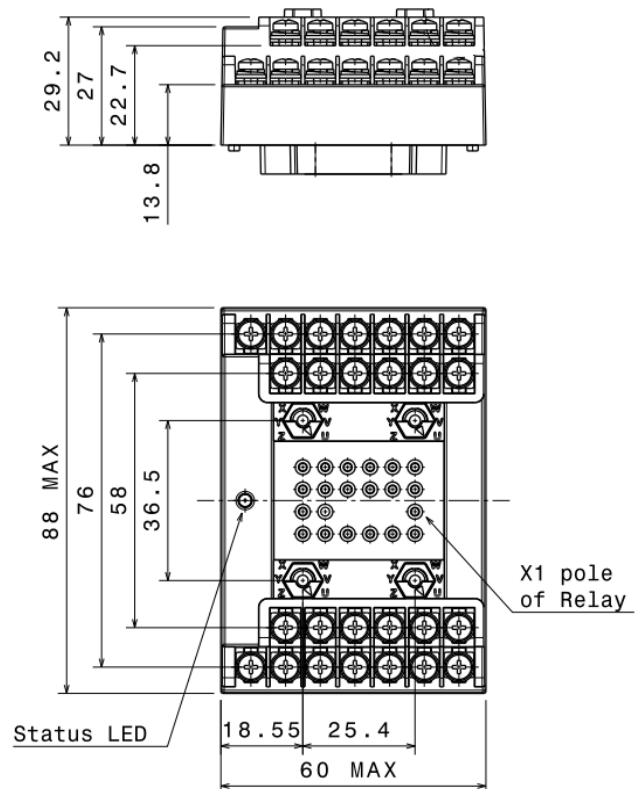
DIMENSIONS DIMENSIONS

Dimensions in mm
Tolerances, unless otherwise specified, $\pm 0.25\text{mm}$

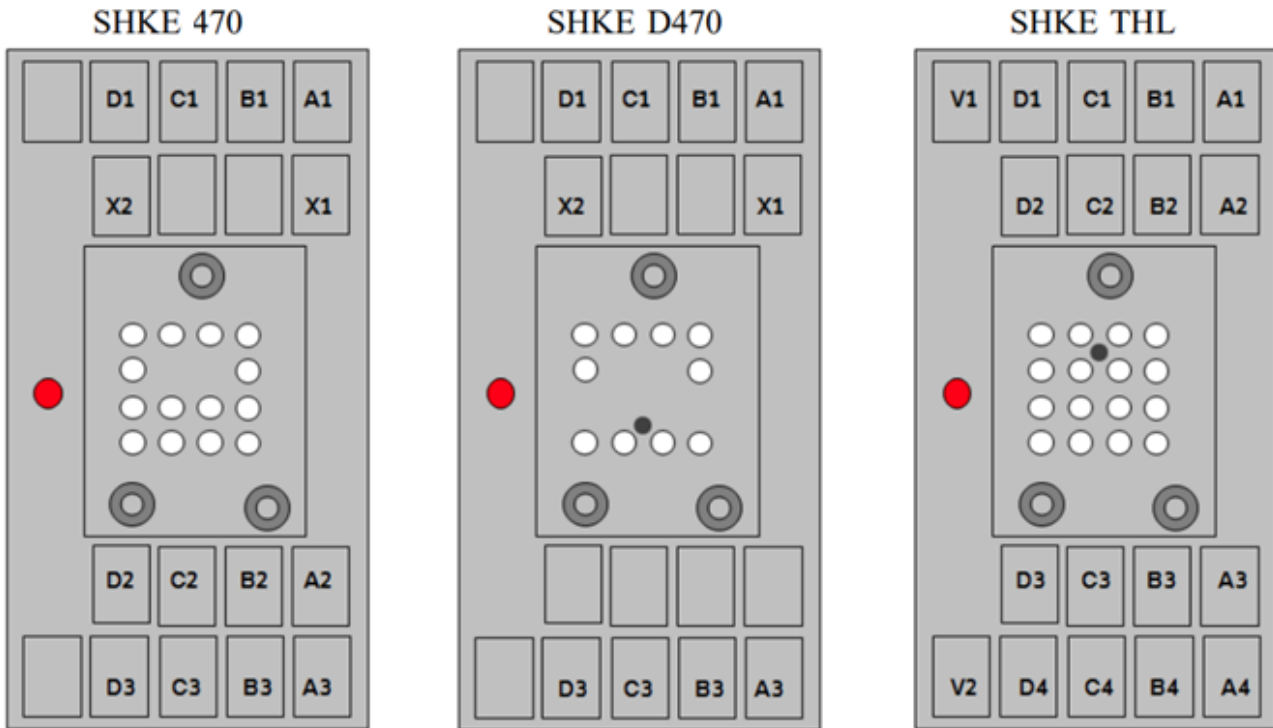
Type SHKE 470 / D470 / THL



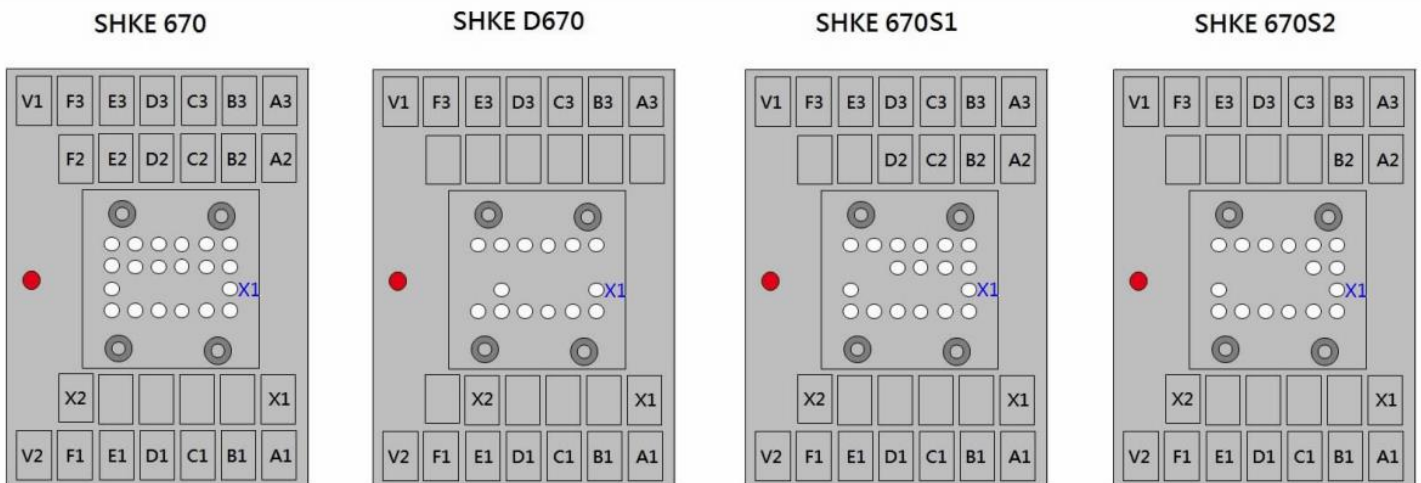
Type SHKE 670 / D670 / 670S1 / 670S2



TERMINAL LAYOUT DISPOSITION DU TERMINAL

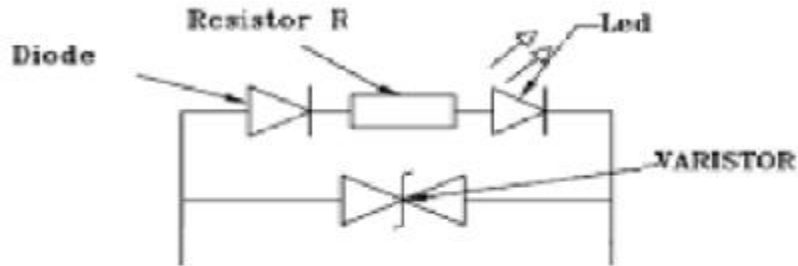


***For D mounting relays

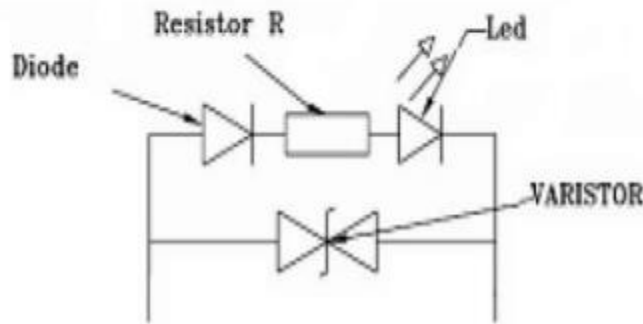


SCHEMATIC DIAGRAM SCHEMAS

Type SHKE 470 / D470 / THL



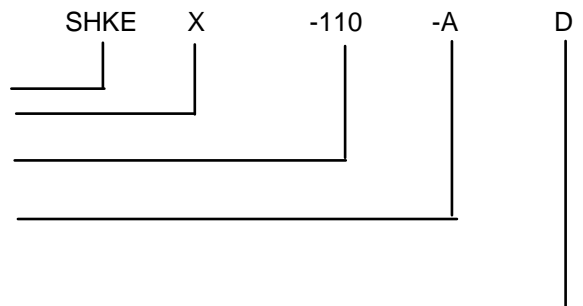
Type SHKE 670 / D670 / 670S1 / 670S2



SOCKET NUMBERING SYSTEM SYSTEME DE REFERENCES

Basic series designation | Référence de base

1. **Sub-series for relay type** | Sous-séries pour le type de relais (470, D470, THL)
2. **Relay coil voltage** | Tension bobine du relay (24V, 36V, 72V, 110V)
3. **LED connection** | Connection LED (A, V)
 A-Internal connected to coil pins X1 & X2, V – No internal connection
4. **Mounting style** | Type de fixations (D, S)
 D-Din rail, S-Screw fixing

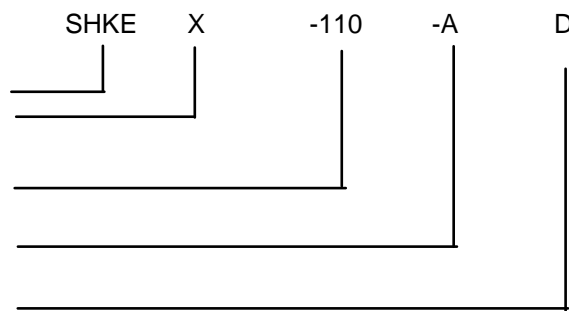


Exemple : SHKE470-110-AD

| Socket part number | LED conection | Relay |
|--------------------|-----------------------------------|--------------------------------|
| SHKE 470 | A (Internal connected to X1 & X2) | F470 |
| SHKE D470 | A (Internal connected to X1 & X2) | FD470 |
| SHKE THL | V (direct connect to V1 & V2) | THLOR, THLAO, THLM, THLC, F472 |

Basic series designation | *Référence de base*

- 1. Sub-series for relay type** | *Sous-séries pour le type de relais*
(670, D670, 670S1, 670S2)
- 2. Relay coil voltage** | *Tension bobine du relay* (24V, 36V, 72V, 110V)
- 3. LED connection** | *Connection LED*
- 4. Mounting style** | *Type de fixations Din rail*



Exemple : SHKE670-110-AD